

Contact Info:

Mississippi River Corridor – Tennessee
www.msrivertn.org
(901) 278-8459

Mayor Jeff Huffman – Tipton County
Chairman – MRCT

Diana Threadgill - Executive Director

Glenn Cox - Director

Peter Brown - Co-Chair – Dyer County MRCT Task Force Committee

The mission of the Mississippi River Corridor – Tennessee is to identify, conserve and interpret the region's natural, cultural and scenic resources to improve the quality of life and prosperity in West Tennessee.

Walton Family Foundation
The State of Tennessee – Department of Economic & Community Development

Tennessee Wildlife Resources Agency
www.TNwatchablewildlife.org
(615) 781-6500

Ed Carter - Director

Scott Somershoe - TN State Ornithologist

Jeanette Jones - GIS Manager

Special Thanks to:

National Audubon Society
www.GreatRiverBirding.org

Now in its second century, Audubon connects people with birds, nature and the environment that supports us all. Their national network of community-based nature centers, chapters, scientific, education and advocacy programs engages millions of people from all walks of life in conservation action to protect and restore the natural world.



Great River Birding Trail - Tennessee

LAKE | OBION | DYER | LAUDERDALE | TIPTON | SHELBY

Birds of the Mississippi River Valley - Tennessee

The Mississippi River is the largest migratory flyway in North America. Millions of birds migrate annually along the 3000 mile river valley to breeding and wintering grounds. The extensive floodplain of the Mississippi River supports millions of waterfowl and many declining songbirds use the remaining bottomland hardwood forests in migration and/or for breeding. The Federally endangered Interior Least Tern nests almost exclusively on sand bars in the Mississippi River. Bird monitoring and research led by Tennessee Wildlife Resources Agency on public lands is helping conservationists and wildlife managers better protect our declining birds.

This map was produced in a partnership between the Mississippi River Corridor – Tennessee (MRCT) and Tennessee Wildlife Resources Agency. More information on bird watching and the birds of Tennessee can be found on the Tennessee's Watchable Wildlife web site at: www.tnwatchablewildlife.org.



Eastern Kingbirds

LAKE COUNTY



Northern Bobwhite

1. Phillipy Pits- These small borrow pits were created when excavation was conducted to build the adjacent Mississippi River Levee. The shallow depressions alongside Levee Road are used by a variety of birds when flooded.

3. Black Bayou Observation Platform- The large Observation Tower presents a high location in a flat landscape for bird watching, especially best in winter when waterfowl are present in large numbers. Explore the Black Bayou hiking trail for great wild-life viewing opportunities.

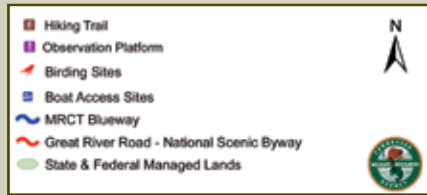
5. Tiptonville Ferry Landing Park - The site consists of a shaded picnic area adjacent to the main channel of the Mississippi River and provides excellent views of main stream river habitats. Unless the river is high, sandbars and a variety of waterbirds may be observed.

6. Reelfoot Lake State Park - The park is a mix of developed parkland interspersed with cypress and bottomland hardwood forests around Reelfoot Lake. More remote parts of the park are accessible using hiking trails near the Airpark Lodge and at Black Bayou.

7. Island 13- Island 13 is a large sandbar on the Mississippi River. It is possible to walk the sand and gravel bars, which provide access to one of the best locations for viewing shorebirds, gulls, terns, and other waterbirds.

8. Lake Isom NWR - The refuge consists of bottomland forests, cypress swamp, and open water. Access to the majority of the refuge is by boat only; however forest birds and waterbirds can be abundant.

9. Tumbleweed WMA - The area on Hwy 79 known as Tumbleweed WMA contains many acres of early successional forests that support scrub-shrub birds, including Northern Bobwhite.



Ring-billed Gull

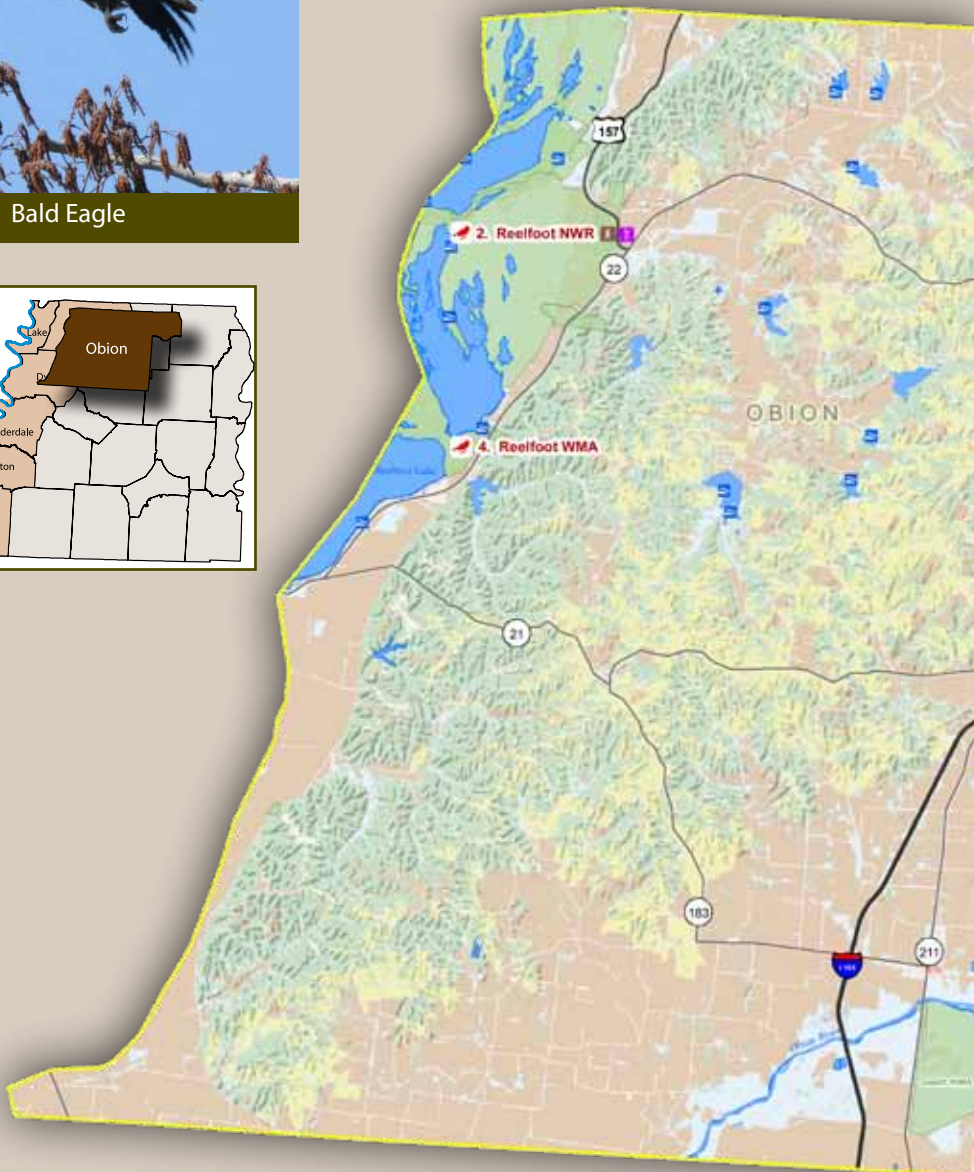
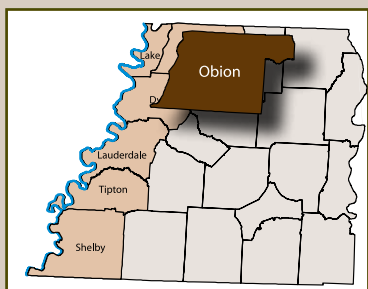
OBION COUNTY



Bald Eagle

2. Reelfoot NWR - Over 10,000 acres of wetlands, forests, and open water are found within the NWR boundaries, which cover the northern third of Reelfoot Lake. Waterfowl abound in winter, while Bald Eagles are common year round but have greatest numbers in winter.

4. Reelfoot WMA - Extensive marshes, bottomland hardwood forests, cypress bottoms, open water, and early successional habitat are used by large numbers of waterfowl and Bald Eagles in winter. Neotropical migrant songbirds are abundant breeding birds in the forests and marshes.



Great Crested Flycatcher

DYER COUNTY



Pileated Woodpecker

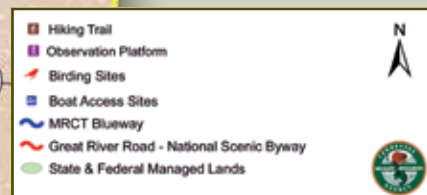
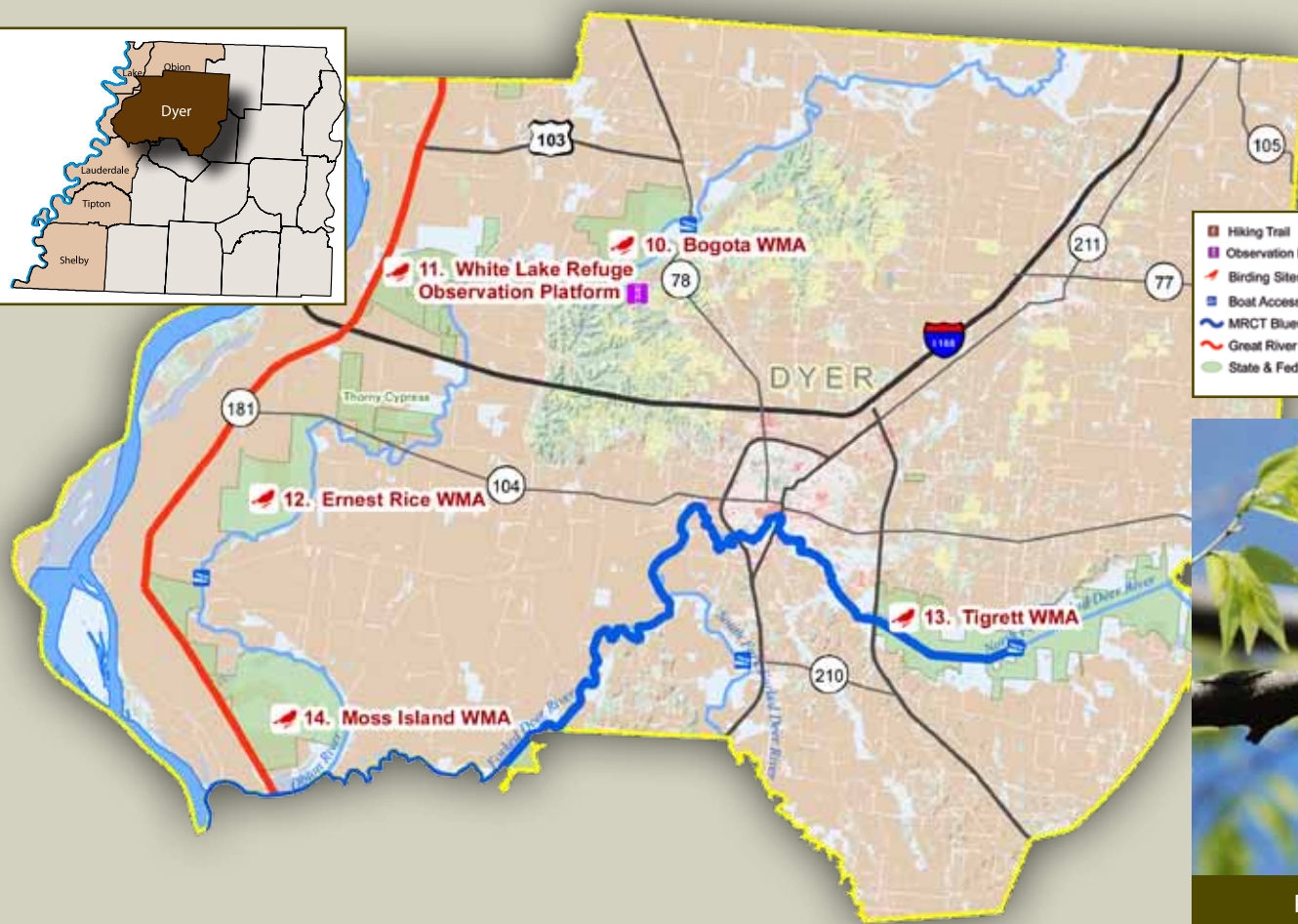
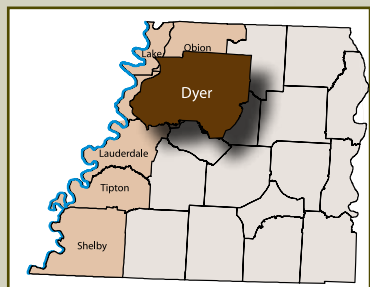
10. Bogota WMA - This WMA contains a mix of habitats including farmland for game management, shrub swamp, bottomland hardwood forest, open water, moist soil management areas, and impoundments. Waterfowl can be common in winter. Grassland/scrub birds are common year round.

11. White Lake Refuge Observation Platform - A ½ mile hiking trail and boardwalk provide birding opportunities in bottomland hardwood forest, open cypress bottoms, and moist soil units managed for shorebirds and waterfowl.

12. Ernest Rice WMA - This site contains a large tract of mature bottomland hardwood forests with some large oaks and hickories. Neotropical migrant songbirds are common nesting birds, while sparrows and harriers are common in winter.

13. Tigrett WMA - The area consists of 7,000 acres of early and late successional bottomland forest areas with some swamps and open bodies of water. Road access into the interior of the area is limited but foot trails and water bodies can be used to explore the interior

14. Moss Island WMA - Moss Island WMA contains a great variety of habitats from mature forests to agricultural lands and reforestation, while some open bodies of water and wetland areas are also present. The birding opportunities are great with >180 species recorded.



Prothonotary Warbler

LAUDERDALE COUNTY



Vesper Sparrow

15. Lauderdale Refuge Observation Platform - The site is mostly farmed bottomlands that are managed for waterfowl, wading birds, and shorebirds. An enclosed and elevated viewing platform is available for birding.

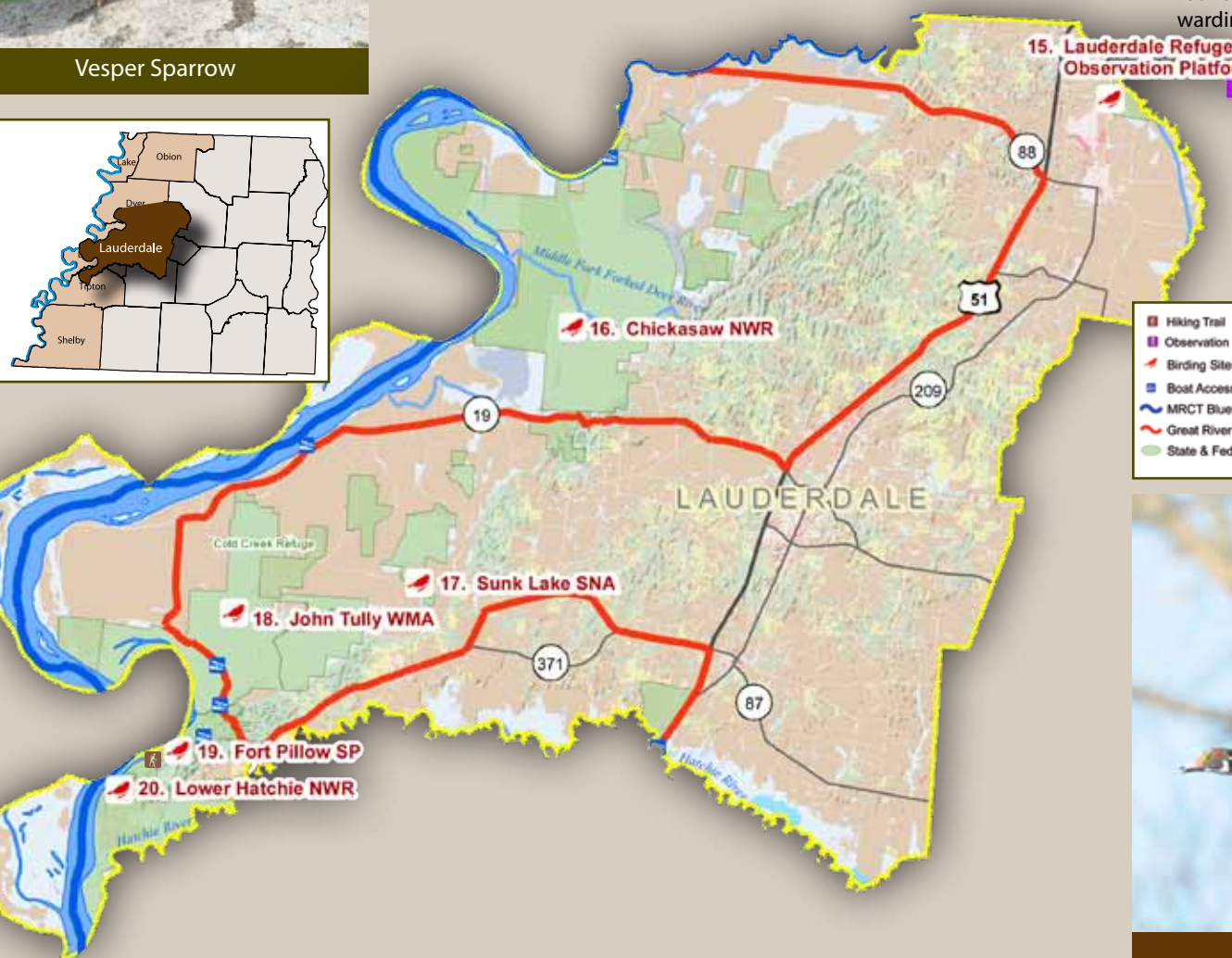
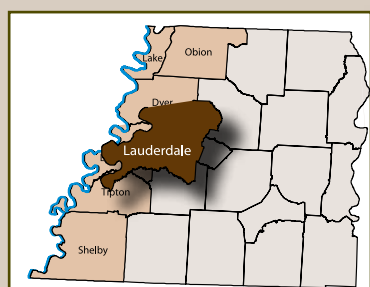
16. Chickasaw NWR - This largely forested refuge encompasses one of the best examples of a Mississippi River floodplain forest ecosystem in West Tennessee. The bird diversity is great at nearly any time of year.

17. Sunk Lake State Natural Area - Cypress swamps, bottomland hardwood forests, and open marsh habitats are home to many bird species throughout the year.

18. John Tully WMA - A diverse mix of bottomland hardwood forest and swamp habitats of varying successional ages provide for a great diversity of birdlife. In summer, look and listen for Cerulean Warblers.

19. Fort Pillow State Park - This park contains outstanding examples of loess bluff upland hardwood forests on the edge of the Mississippi River valley, while also containing some bottomland hardwood forests of great stature.

20. Lower Hatchie NWR - The site contains a variety of forested and non-forested habitats and impressive access to Mississippi River riverfront and sandbar habitats. Birding year round can be very productive and rewarding.



Wood Duck

TIPTON COUNTY



Eastern Phoebe

21. Randolph Bluff – Situated in Tipton County on the 2nd Chickasaw Bluff about 50 minutes NW of Memphis, this community offers unparalleled natural views across the Mississippi River. The community contains or is adjacent to a diverse habitat ranging from forest, shrub, open grassland and wetland.

Randolph Bar – This island in the Mississippi River is used for nesting by federally endangered Least Terns in spring and summer. The island is used by shorebirds and Peregrine Falcons during spring and fall migration.



Killdeer

SHELBY COUNTY



Mississippi Kite

22. Meeman Shelby Forest State Park and Wildlife Management Area - The area contains a variety of bottomland forests, upland hardwoods, and loess bluff forest habitats. Hiking trails and several lakes provide excellent access to forest birds and waterbirds.

marily open lawn with scattered trees; however they provide great views of the Mississippi River and migrating birds.

23. Eagle Lake Refuge Observation Platform - Views from the observation tower provide a great vantage point over farmland managed for waterfowl in winter and shorebirds in spring and fall, if water levels are appropriate. Bald Eagles are seen regularly and nest on site.

25. Overton Park - This typical urban city park has preserved an old growth, mature hardwood forest complete with walking trails. Forest birds are abundant, especially during spring and fall migration.

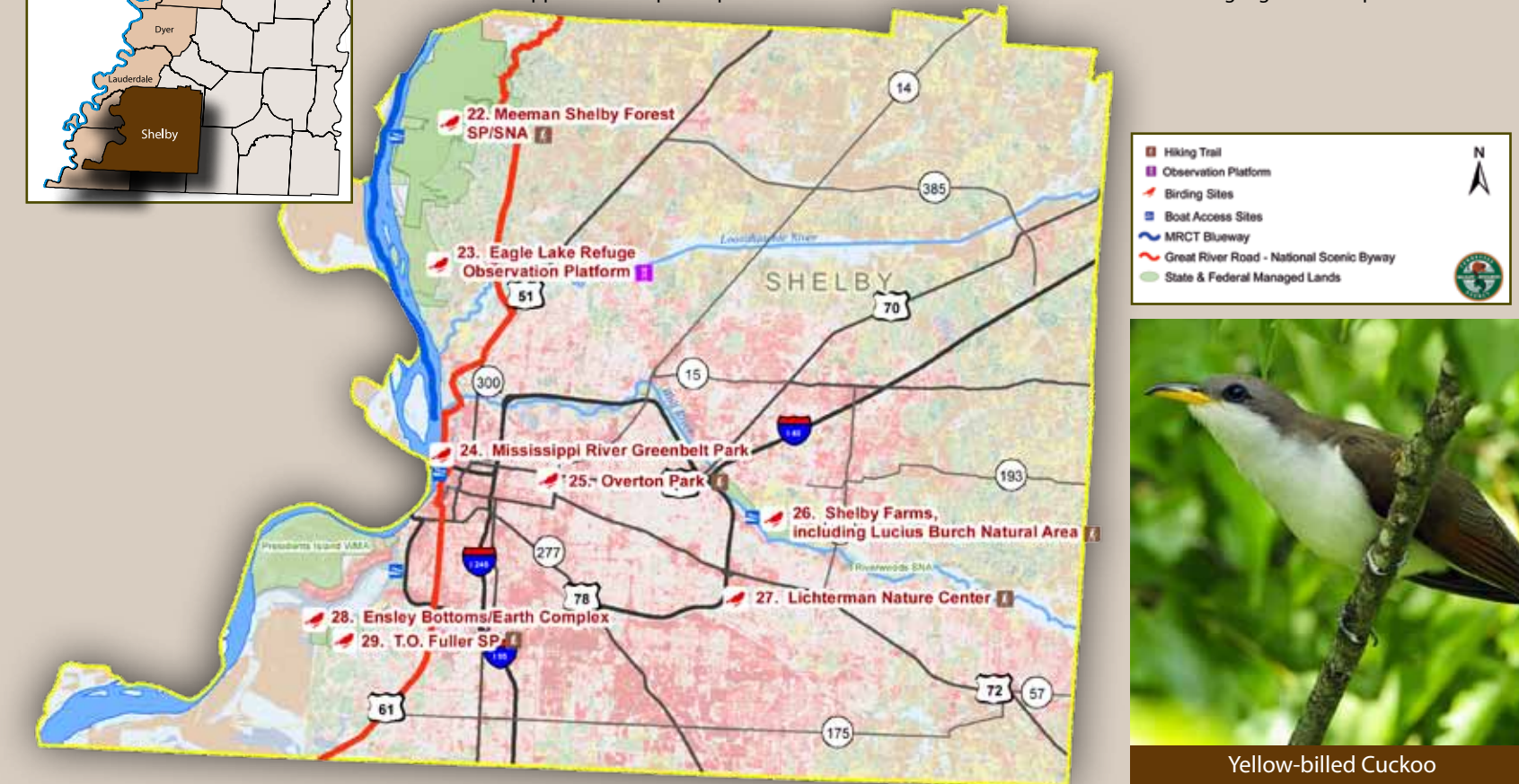
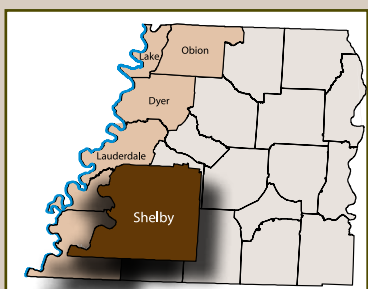
27. Lichterman Nature Center - The nature center has trails through upland hardwood forests, around ponds and wetlands.

24. Mississippi River Greenbelt Park - This urban park is located adjacent to the Mississippi River. The park is pri-

26. Shelby Farms, including Lucius Burch Natural Area - The area contains a variety of bottomland forests, upland hardwoods, and loess bluff forest habitats. Hiking trails and several lakes provide excellent access to forest birds and waterbirds.

28. Ensley Bottoms/Earth Complex - The site consists of sewage drying ponds, with the majority being dry managed. Shallow water/mudflat habitat attractive to shorebirds can be abundant. The area is not open to the general public but birders are allowed to enter. Use caution on all dirt roads.

29. T.O. Fuller State Park - The park provides easy access to bottomland hardwood forests and loess bluff forests in the urban landscape. Mississippi Kites and Yellow-billed Cuckoos are highlights of this park.



Yellow-billed Cuckoo

Great River Birding Trail - Tennessee



Northern Cardinal



Tufted Titmouse



Yellow-throated Warbler



Greater Yellowlegs



Belted Kingfisher



Red-tailed Hawk



Northern Flicker



Blue-gray Gnatcatcher



Great Blue Heron



Hermit Thrush



Barn Swallow



Ruddy Turnstone



Carolina Chickadee



Chipping Sparrow



Eastern Wood-Pewee



Hooded Merganser



Eastern Meadowlark

BIRDS OF THE MISSISSIPPI RIVER VALLEY

Common Name	W	Sp	Su	F	Common Name	W	Sp	Su	F	Common Name	W	Sp	Su	F
Black-bellied Whistling-Duck		R	R		Whimbrel		O	O		Sedge Wren	R	U		U
Fulvous Whistling-Duck		O	O		Long-billed Curlew		O	O		Marsh Wren	R	U		U
Greater White-fronted Goose	F	F		F	Hudsonian Godwit		O	O	O	Golden-crowned Kinglet	F	F		F
Snow Goose	C	C		C	Marbled Godwit		O	O	O	Ruby-crowned Kinglet	C	C		C
Ross's Goose	U	U		U	Ruddy Turnstone		R	R	R	Blue-gray Gnatcatcher		C	C	U
Cackling Goose	U	U		U	Red Knot			O	O	Eastern Bluebird	C	C	C	C
Canada Goose	C	C	C	C	Sanderling		O	U	U	Veery		U		U
Mute Swan	O	O	O	O	Semipalmated Sandpiper		F	F	F	Gray-cheeked Thrush		U		U
Trumpeter Swan	O				Western Sandpiper	O	U	U	U	Swainson's Thrush		F		F
Tundra Swan	O				Least Sandpiper	U	C	F	C	Hermit Thrush	C	C		C
Wood Duck	U	F	F	F	White-rumped Sandpiper		U	U	R	Wood Thrush		C	C	
Gadwall	C	C		C	Baird's Sandpiper		R	U	U	American Robin	C	C	C	C
American Wigeon	F	F		F	Pectoral Sandpiper		F	F	F	Gray Catbird	O	F		F
American Black Duck	U	U		U	Dunlin	R	U	U	U	Northern Mockingbird	C	C	C	C
Mallard	C	C	C	C	Stilt Sandpiper		U	U	F	Brown Thrasher	U	F	F	F
Blue-winged Teal	O	C	R	F	Buff-breasted Sandpiper			U	U	European Starling	C	C	C	C
Northern Shoveler	C	C	R	C	Ruff			O		American Pipit	U	U		U
Northern Pintail	C	C		F	Short-billed Dowitcher		U	U	U	Cedar Waxwing	F	C	R	C
Green-winged Teal	C	C		C	Long-billed Dowitcher		U	U	U	Blue-winged Warbler		U		U
Canvasback	U	U		U	Wilson's Snipe	U	U	O	U	Golden-winged Warbler		U		U
Redhead	U	U		U	American Woodcock	U	U	R	U	Tennessee Warbler		C		F
Ring-necked Duck	C	C		C	Wilson's Phalarope		R	U	U	Orange-crowned Warbler	R	U		U
Greater Scaup	U	U		U	Red-necked Phalarope		O	O	R	Nashville Warbler		F		F
Lesser Scaup	C	U		C	Red Phalarope		O		O	Northern Parula		C	C	U
Surf Scoter	O				Laughing Gull	O	R		R	Yellow Warbler		C	U	U
White-winged Scoter	O	O			Franklin's Gull	O	R	O	R	Chestnut-sided Warbler		C	C	C
Black Scoter	O				Bonaparte's Gull	F	F		F	Magnolia Warbler		C		C
Long-tailed Duck	O				Ring-billed Gull	C	C	R	C	Cape May Warbler		U		R
Bufflehead	C	C		C	Herring Gull	U	U	O	U	Black-throated Blue Warbler		R		
Common Goldeneye	U			U	Lesser Black-backed Gull	O	O			Yellow-rumped Warbler	C	C		C
Hooded Merganser	F	F	U	F	Sabine's Gull				O	Black-throated Green Warbler		C		C
Common Merganser	O				Least Tern		F	F	U	Blackburnian Warbler		F		U
Red-breasted Merganser	U	U		U	Caspian Tern		U	U	U	Yellow-throated Warbler		F	U	U
Ruddy Duck	C	F		F	Black Tern		U	U	U	Pine Warbler	U	F	U	F
Wild Turkey	F	F	F	F	Common Tern		U	U	U	Prairie Warbler		R	R	
Northern Bobwhite	F	F	U	U	Forster's Tern	O	F	U	F	Palm Warbler	R	U		U
Red-throated Loon	O				Rock Pigeon	C	C	C	C	Bay-breasted Warbler		U		U
Pacific Loon	O		O		Eurasian Collared-Dove	F	F	F	F	Blackpoll Warbler		C		R
Common Loon	U			U	Mourning Dove	C	C	C	C	Cerulean Warbler		F	R	O
Pied-billed Grebe	C	C	R	C	Common Ground-Dove	O	O			Black-and-white Warbler		F	R	F
Horned Grebe	U			U	Yellow-billed Cuckoo		C	C	U	American Redstart		C	U	F
Red-necked Grebe	O				Black-billed Cuckoo		R	O	R	Prothonotary Warbler		C	C	U
Eared Grebe	R	R			Barn Owl	U	U	U	U	Worm-eating Warbler		U	R	R
Western Grebe	O	O			Eastern Screech-Owl	F	F	F	F	Swainson's Warbler		U	U	
American White Pelican	F	F	U	F	Great Horned Owl	F	F	F	F	Ovenbird		C	R	R
Neotropic Cormorant			O	O	Barred Owl	C	C	C	C	Northern Waterthrush	O	U		U
Double-crested Cormorant	C	C	U	C	Long-eared Owl	O				Louisiana Waterthrush		U	U	
Anhinga		R	R		Short-eared Owl	U	R		R	Kentucky Warbler		U	U	
American Bittern		U		U	Northern Saw-whet Owl	O				Connecticut Warbler		R		
Least Bittern		U	U		Common Nighthawk	O	F	F	U	Mourning Warbler		R		R
Great Blue Heron	C	C	C	C	Chuck-wills-widow		U	U		Common Yellowthroat	R	C	U	U
Great Egret	R	C	C	C	Whip-poor-will		R		R	Hooded Warbler		F	U	U
Snowy Egret		F	F	F	Chimney Swift		C	C	C	Wilson's Warbler		U		U
Little Blue Heron		F	F	F	Ruby-throated Hummingbird		C	C	C	Canada Warbler		U		U
Tricolored Heron		O	O	O	Belted Kingfisher	F	F	F	F	Yellow-breasted Chat		F	F	U
Cattle Egret		F	F	F	Red-headed Woodpecker	F	F	F	F	Summer Tanager		F	F	F
Green Heron		F	F	F	Red-bellied Woodpecker	C	C	C	C	Scarlet Tanager		U		U
Black-crowned Night-Heron		U	U		Yellow-bellied Sapsucker	F	F		F	Eastern Towhee	F	F	F	F
Yellow-crowned Night-Heron		U	U		Downy Woodpecker	C	C	C	C	American Tree Sparrow	R			
White Ibis		O	R	R	Hairy Woodpecker	U	U	U	U	Chipping Sparrow	U	C	U	C
Glossy Ibis		O	O	O	Northern Flicker	C	C	C	C	Field Sparrow	C	C	C	C
White-faced Ibis		O	O	O	Pileated Woodpecker	F	F	F	F	Vesper Sparrow	R	U		U
Roseate Spoonbill		O	O	O	Olive-sided Flycatcher		U	U	U	Lark Sparrow		O	O	O
Wood Stork			R	R	Eastern Wood-Pewee		F	F	U	Savannah Sparrow	C	C		C
Black Vulture	F	C	F	F	Yellow-bellied Flycatcher		R		R	Grasshopper Sparrow	O	U	U	R
Turkey Vulture	F	C	C	C	Acadian Flycatcher		C	C	U	Le Conte's Sparrow	U	U		U
Osprey		U	U	U	Alder Flycatcher		R			Fox Sparrow	U			U
Mississippi Kite		C	C		Willow Flycatcher		R	R		Song Sparrow	C	C	R	C
Bald Eagle	F	F	F	F	Least Flycatcher		U		U	Lincoln's Sparrow	R	U		U
Northern Harrier	F	F		F	Eastern Phoebe	U	F	F	F	Swamp Sparrow	C	F		F
Sharp-shinned Hawk	U	U	R	U	Great Crested Flycatcher		F	F		White-throated Sparrow	C	C		C
Cooper's Hawk	U	U	U	U	Western Kingbird		R	R	R	White-crowned Sparrow	U	U		U
Red-shouldered Hawk	F	F	F	F	Eastern Kingbird		C	C	U	Dark-eyed Junco	C	C		C
Broad-winged Hawk		U	U	U	Scissor-tailed Flycatcher		R	R	R	Lapland Longspur	U	R		R
Red-tailed Hawk	C	C	C	C	Loggerhead Shrike	U	U	U	U	Smith's Longspur	O	O		
Rough-legged Hawk	R	R		R	White-eyed Vireo	O	C	C	U	Northern Cardinal	C	C	C	C
Golden Eagle	R			R	Bell's Vireo		R	R		Rose-breasted Grosbeak		F		F
American Kestrel	C	C	U	C	Yellow-throated Vireo		F	F		Blue Grosbeak		U	U	U
Merlin	R	O		O	Blue-headed Vireo	R	U		U	Indigo Bunting	O	C	C	F
Peregrine Falcon	O	R		R	Warbling Vireo		F	F	U	Painted Bunting		R	R	
Yellow Rail		O		O	Philadelphia Vireo		U	U	U	Dickcissel		C	C	R
King Rail		R	R		Red-eyed Vireo		C	C	F	Bobolink		U		
Virginia Rail		R	R	R	Blue Jay	C	C	C	C	Red-winged Blackbird	C	C	C	C
Sora		F		F	American Crow	C	C	C	C	Eastern Meadowlark	C	C	C	C
Common Moorhen		R		R	Fish Crow	U	F	F	F	Western Meadowlark	U	O		R
Purple Gallinule		O	O		Horned Lark	C	C	C	C	Rusty Blackbird	U	U		U
American Coot	C	C	O	C	Purple Martin	O	C	C	O	Brewer's Blackbird	U	U		U
Sandhill Crane	U	R		U	Tree Swallow	O	C	U	F	Common Grackle	C	C	C	C
Black-bellied Plover		U	R	U	Northern Rough-winged Swallow		F	U	F	Brown-headed Cowbird	F	C	C	C
American Golden-Plover		F	R	R	Bank Swallow		U	U	U	Orchard Oriole		F	F	R
Semipalmated Plover		F	U	F	Cliff Swallow		U	U	U	Baltimore Oriole		F	F	R
Piping Plover		R	O	R	Barn Swallow	O	C	C	C	Purple Finch	U	U		U
Killdeer	C	C	C	C	Carolina Chickadee	C	C	C	C	House Finch	F	F	F	F
Black-necked Stilt		U	U	R	Tufted Titmouse	C	C	C	C	Pine Siskin	R	R		R
American Avocet		R	R	R	Red-breasted Nuthatch	R			R	American Goldfinch	C	C	C	C
Spotted Sandpiper	O	C	U	C	White-breasted Nuthatch	F	F	F	F	Evening Grosbeak	O			
Solitary Sandpiper		F	U	F	Brown Creeper	F	F	O	F	House Sparrow	C	C	C	C
Greater Yellowlegs	U	C	F	C	Carolina Wren	C	C	C	C					
Willet		R	R	R	Bewick's Wren		O	O	O					
Lesser Yellowlegs	U	C	F	C	House Wren	U	F	U	F					
Upland Sandpiper		U		U	Winter Wren	F	F		F					

C-common, F- fairly common, U-uncommon, R-rare, O-occasional

W: Dec-Feb, Sp: Mar-May, Su: June-July, F: Aug-Nov